

Let Us Play February

Issue

96

For children with special needs and disabilities and their siblings



Well here we are 2021 and I need to once again talk about Covid. Initially after the New Year we had to hold off doing any planning as once the Prime Minister put us into the third lock down it does take a few days for all the guidance to be updated. I think this is understandable things at times have happened quickly and things need to be right not rushed. The new guidance encourages us to carry on providing activities with lots of rules and guidance in place. I think we all understand that any contact with others brings risks and I can't guarantee that the sessions will be Covid free. We can only follow all the guidance, do all the cleaning and ask families to read and follow the rules. Remember the office is only used by Claire and me all week, unlike schools and community centres. So we are able to reduce risk simply by knowing who has been in the building. We won't be restarting the parents group until the R rate has gone down locally, simply to reduce risk. I have re listed all the rules and guidance on the next page. It is mostly common sense, but just a couple of things. Indoor sessions will be around 9 children, this means places will be in short supply. Please tell us if you know you can't attend, as soon as possible please. Mobile 07979751893 for those who don't have it. A little bit of good news we passed our OFSTED inspection with no concerns so we were really pleased. They do it at really short notice so we don't have time to prepare.

We got some really positive feedback about the Grotto before Christmas. I have been aware for many years that some of the children hate the noise of a Christmas Party. I would be interested in collecting more feedback as to which families prefer



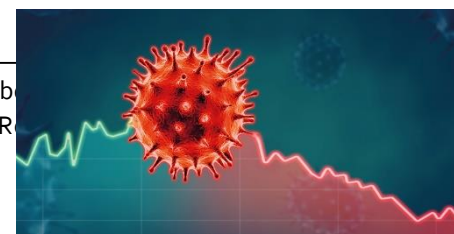
to help us make decisions going forward. Thank You to all who helped.



COVID GUIDANCE:



Let Us Play (Wolverhampton) Registered charity number 5042881 7 Shaw Park Business Village, Shaw R
www.lupwolverhampton.org.uk 01902 546258



We will do our very best to ensure that:

- ✚ No member of staff will work if they are unwell or are isolating
- ✚ Hand sanitising and washing will take place regularly at sessions
- ✚ When indoors no more than 10 children will be present
- ✚ Children will be allocated to a staff member who will support them throughout the session.
- ✚ We will socially distance to at least one meter when sitting
- ✚ Any child who becomes unwell will be sent home or isolated.
- ✚ Every surface, toy and toilet will be sanitised at the start of the session
- ✚ Our office has been deep cleaned, all bags and containers have been washed.
- ✚ Sessions for more than 10 children will take place outdoors.
- ✚ Unless needed coats will be sent home
- ✚ No lunch boxes are allowed unless the child has a special diet
- ✚ No toys from home are allowed unless essential to the child's wellbeing such as comforters
- ✚ All biscuits and where possible snacks will be individually wrapped.
- ✚ No self-service for food allowed.
- ✚ We are offering a storage service if you don't want to take crafts home that day.
- ✚ We will notify Track and Trace and families directly if a staff member becomes Covid positive.
- ✚ All staff and children will have their temperature taken at the start of the session.

We are asking that parent / carers ensure that:

- ✚ No toys are brought to sessions
- ✚ If your child needs a special diet please phone us in advance.
- ✚ Please don't send your child if they are unwell in anyway.
- ✚ If your child is coughing due to asthma you must let us see their medication with their name on the label.
- ✚ Please take coats home if session is indoors
- ✚ Please don't waste allocated places, they are going to be precious.
- ✚ Please turn up on time and collect on time. We must have time to clean after a session.
- ✚ Please socially distance outside the office.
- ✚ If a member of your family becomes Covid positive after a session you must tell us.
- ✚ You are not allowed to use public transport, lift share or take a taxi to attend a session.
- ✚ You are not allowed to attend a medical appointment then come onto a session.

However despite this these are special children who don't fully understand social distancing in many cases, we will do our very best but can't guarantee. Parents will have to risk assess and decide for themselves if they want their children to attend sessions. I think this especially applies to what we call 'break out time'. This is when the children are allowed to play in the playroom.

The program listed maybe subject to change if guidance changes or staff test positive.

Parents Group

This won't be meeting just yet but there is a Zoom Family Fortunes styled Quiz on the morning of Wednesday 3rd February at 10:00am. Please tell Claire if you would like to take part. There are nice prizes for the winning team.



There are some South Staffordshire activities on this newsletter. Priority is given to Staffordshire children where you see this symbol. However there should be some additional places for Wolverhampton families so just ask

Saturday 6th February 2021

Victoriana

2 sessions

9:30 – 12:30 for Staffordshire children

&

1:30 – 4:30

LUP office

7 Shaw Park Business Village

WV10 9LE



5 – 19 years

Queen Victoria used to eat sponge cake every afternoon with her tea. So this session comprises of making a Victoria sponge and creating a Victorian styled sepia Photograph in a frame.

1:1 place on each session



Saturday 6th February 2021

Flowers

2 sessions

9:30 – 12:30 for Staffordshire children

&

1:30 – 4:30

LUP office

7 Shaw Park Business Village

WV10 9LE



5 – 19 years

Create a flower arrangement and card to give to somebody you love. There is also a junior quiz with prizes.

1:1 place on each session



Monday 15th February 2021
Large Screen Gaming with KFC
2 sessions
10:00am – 1:00
for Staffordshire children
&
2:00 – 5:00

LUP office
7 Shaw Park Business Village
WV10 9LE



8 – 19 years

Self-explanatory. Priority given to those who requested places but didn't get them when we last ran a LSG session. The morning session will have their food about 12noon with the afternoon session having theirs at 4:00pm.



Tuesday 16th February
Castles
3 sessions
10:00am – 1:00
for Staffordshire children
&
2:00 – 5:00

Also Wednesday morning
17th February
9:30 – 12:30

LUP office
7 Shaw Park Business Village
WV10 9LE



5 – 19 years

This can be a medieval castle, modern castle, fairy castle with glitter etc. Whatever your imagination decides. Made from cardboard, sticky back plastic. Can be thrown away when finished with.



Wednesday afternoon 17th February
1:30 – 4:30
And Thursday 18th February
10:00am – 1:00
for Staffordshire children &
2:00 – 5:00

Cheese Straws and Hama Beads

LUP office
7 Shaw Park Business Village
WV10 9LE

5 – 19 years

A cookery session with craft. Hama beads with some other bits and bobs. To try to accommodate numbers note both castle and cheese straws are over 3 sessions. Please be clear which one you wish to book or if you are flexible please say.



Saturday 27th February

10:15 -12:30

Low impact paintball

Skirmish Paintball, Cannock Road, WV10 7AD

Please note there are 2 additional paintball venues in the area. Please ensure you attend the correct one. Meet in reception.



8 – 19 years

This is a whole family activity. You are expected to support your own child. There are a small number of places for unaccompanied children.

The refreshment facilities are closed so please send a mid morning drink and biscuit. A change of clothes maybe necessary. We suggest boots or wellies to play in, it can get very muddy. Session will take place whatever the weather on the day.



Could you let us know if any of the children who are attending school have been having lateral flow tests? Obviously it would be reassuring to know they tested negative but we are also trying to build a picture of what is happening locally. At the moment it feels very inconsistent. We will be asking our staff the same question.

Children who are isolating or have chosen not to attend sessions to stay safe. We do have a limited number of art packs to send out to members who are not accessing LUP activities. Please tell Claire on the bookings email.

BOOKINGS

The bookings allocation day is Tuesday 26th January. Claire will allocate on this Tuesday so bookings will close on Monday 25th at midnight.

Membership

At the moment we have temporarily closed the membership of LUP. With Covid restrictions we feel we cannot take any new members for the time being. With reduced places on sessions we are struggling to accommodate our current membership.