



Summer

Issue
100

For children with special needs and disabilities and their siblings



Welcome to issue number 100!! I think getting to issue 100 is quite an achievement.



We got quite a few grumbles about the last newsletter, *Compass* in particular seemed to set everybody off. I just wanted to go back to talk about something I have said before, but not for a long while. The essence of Let us Play is that we do not ask for money. Your membership £20 simply pays for the newsletter printing and distribution. We want to have our sessions available to all regardless of income, disability or anything else. The hard truth is though that everything costs, and the past 12 months in particular have made it hard to source funding. So, in a nutshell, we get driven by what funding we can find, occasionally we do things which I don't totally agree with. *Compass* not taking siblings is a good example. I know siblings miss out a lot, its why we take them, but should I have refused the money because of it? That wouldn't be fair on one child families or families where siblings don't attend. Likewise families who don't have a WV postcode are excluded, but we already do activities for Staffordshire children via Staffordshire Short Breaks program. I know it's not perfect, hardly anything ever is, but I felt quite pummelled after the last newsletter went out, as did Claire. So while I am having a little moan I also wanted to say that the essence of LUP is that your child attends what we do when something interests them, it's about being part of the LUP family. We had several phone calls after the last newsletter went out where none members had been told about the trips and wanted to join just for that purpose.

This newsletter has a wide variety of activities, there is something for everybody but nothing is suitable for all. As ever if something is your first choice tell Claire and she will do her best to see you get it. Claire also looks back to check who has had what and does her best to allocated fairly. If you want your child's sibling to attend a *Compass* activity she can put them on a waiting list to see if it doesn't fill up or if we have a last minute cancellation. Bookings will close on Sunday 4th July with allocation starting on **Monday 5th July**. Claire and I are both taking a short holiday in July and the office won't be manned as much as usual. Any queries please email the bookings line, Claire will be able to monitor it from her hols.



Let Us Play (Wolverhampton) Registered charity number 1104506 Company LTD by Guarantee number 5042881, 7 Shaw Park Business Village, Shaw Road, Wolverhampton WV10 9LE www.lupwolverhampton.org.uk 01902 546258

Thank You!

Claire and Kim were both awarded the British Empire Medal in the Queen's birthday honours list in June 2021. It was given for the work we do at Let us Play. The British Empire Medal is a British and Commonwealth award for meritorious service worthy of recognition by the crown. It is given for hands on service especially local service that make a significant difference. Claire and I want to thank sincerely the parents who nominated us. It was a real thrill and meant so much. We get invited to a ceremony hosted by the Lord Lieutenant (her majesty's representative) and a garden party at Buckingham Palace at some point in the future. We will post photographs when we have them.



Tuesday Evening

20th July 2021

4:45 until 7:00pm

Low Impact Paintball

Warped Activity Centre

Castle Wood

Cosford Wolverhampton

TF11 8PN



Obviously dress appropriate for the weather.

Protective equipment supplied and users must wear it.

After the session participants are given a hot dog and drink.

Very close to junction 3 on the M54 right by RAF Cosford.

Monday 2nd August

10:00am until 1:45

Sports Day Monday

Bert Williams Leisure Centre

WV Active

Nettlefolds Way, Bilston

WV14 0EF



8 – 19 years

Packed lunch needed and drinks or refillable bottle.

Multi sport session on the theme of school sports day. Teams will compete against each other for prizes. Finishes with swimming in the training pool. Don't forget your swim kit. Please meet us in reception just before 10am

Tuesday 3rd August

Wildside Activity Centre

Hordern Rd, Wolverhampton WV6 0HA

10:00am – 3:30pm

Packed lunch needed



5 – 19 years



Staffordshire children have priority but there will be additional places for others. Includes Canoeing, fire lighting and nature craft. Parking can be a bit tight when dropping off and collecting please be considerate.

Wednesday 4th August

Huggle Pets

10:30am – 12:00noon

Sensory play and animal petting and education.

Huggle Pets
Cooper Street
Wolverhampton
WV2 2JL

Mid-morning break supplied.

Although only a 1.5-hour session we don't expect parents to stay as space is limited in the activity space.

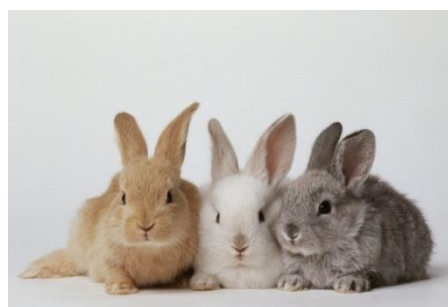
5 – 19 years

This session is for those children with higher levels of need.

1: 1 places available.

There is a lovely sensory fish tank room, sensory playroom and lots of animals that just love cuddles.

The building is quite close to Monmore Green off the Bilston Road. They have a website if you want to check them out.



Wednesday 4th August

9:30 – 12:30 noon

Or

1:30pm – 4:30pm

Under The Sea

Let Us Play Offices, 7 Shaw Park Business Village Shaw Road, Wolverhampton WV10 9LE

5 – 19 years

Craft session with 4 crafts themed under the sea.

Drinks and snacks provided

1:1 places available on afternoon session



On **Friday 6th August** there is a whole family activity to **Trentham Monkey Forest**. This is for Staffordshire families only. Please book via Staffordshire Connect helpline. Let Us Play are facilitating this activity, but none of our staff will be present on the day. Tickets posted out in advance.



Tuesday 10th August

9:30 – 12:30 noon

Or

1:30pm – 4:30pm

Gingerbread People

Let Us Play Offices, 7 Shaw Park Business
Village Shaw Road,
Wolverhampton WV10 9LE

5 – 19 years



Baking and decorating session. Morning session has places for Staffordshire children. Drinks and snacks 1:1 places available



Wednesday 11th August

Laches Wood Outdoor Centre

10:00 – 2:00pm



Laches Ln, Slade Heath, Coven,
Wolverhampton WV10 7PA

5 – 14 years

Packed lunch needed for this session and extra drinks. This does include canoes and last year it was a beautiful day and several children 'accidently' fell in. So we suggest additional clothes in a back pack which can be left in their base for the day. If it's been raining a lot then stout footwear please. Children will be put into groups loosely based on ability.

Thursday 12th August

Gateaux Making
(Black forest, no nuts)

9:30 – 1:00pm

Or

1:30pm – 5:00pm

There is a bit of hanging around with this while the cakes cook. So we will run a quiz and games session along side.



Small group session



Monday 16th August Warwick Castle

9:15am meeting at our Shaw Park offices.
Please park, drop off and then depart so
as to free up parking for others. Coach
will leave at 9:30 prompt



Although this is open to all ages, there is a lot of walking.

We won't be doing the dungeon, It's expensive and last time many hated it. Children will meet back at the coach for 4:00pm so we would estimate being back for around 5:15. Collect from Shaw Park When dropping off and collecting please be considerate of our neighbours most of whom finish at 5pm. Packed lunch essential. Please don't send money for the shop but please send money for icecream.

No 1:1 places on this activity

Tuesday 17th August Large Screen Gaming and McDonalds lunch

10:00 – 2:00pm

Let Us Play Offices, 7 Shaw Park Business
Village Shaw Road,
Wolverhampton WV10 9LE

You can choose your food on
the day.



Wednesday 18th August 10:00am – 3:00pm Albrighton Moat Fishing



Blue House La, Wolverhampton
WV7 3FL

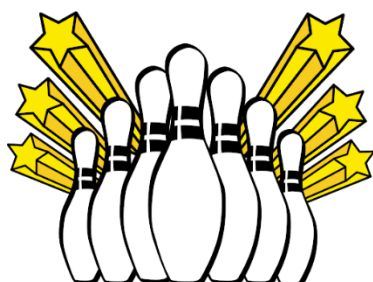
5 – 19 years

Exclusive use. BBQ lunch provided. Please remind us if you need vegetarian option. There will be some craft activity running alongside, usually we can't allow all the children to fish at the same time due to pegs available.

Sorry no 1:1 places

Thursday 19th August Bowling & Cosmo

Bentley Bridge retail park
Drop off at bowling 10:45 collect from
Cosmo at 1:15



This is a
Staffordshire
session but there
should be

additional places available so please ask.



COSMO

Pan Asian and
World Banquet Dining

No 1:1 places sorry

Monday 23rd August Water Colour Art

9:30 – 12:30

Let Us Play Offices, 7 Shaw Park Business
Village Shaw Road,
Wolverhampton WV10 9LE

Mid morning snacks provided

This is a whole family activity where adults can stay if they wish.

Please tell us when booking if you intend to stay or not. No previous knowledge assumed. Total beginner session only.

Probable places for none Staffordshire families



Wednesday 25th August Sensory Play

9:30 – 12:30



Let Us Play Offices, 7 Shaw Park Business
Village Shaw Road,
Wolverhampton WV10 9LE

This session is for our 1:1's and those with higher levels of need. Sensory play using bubbles, sand and water. Bouncy Castle

Snacks and drinks provided. Lots of 1:1 places.



Wednesday 25th August 2021 Magic Workshop

1:30 – 4:30pm



Let Us Play Offices, 7 Shaw Park Business
Village Shaw Road,
Wolverhampton WV10 9LE

Run by an experienced magician who will show and teach a few tricks for you to learn and take home. Lots of it is based around playing cards and you do need a little concentration!!

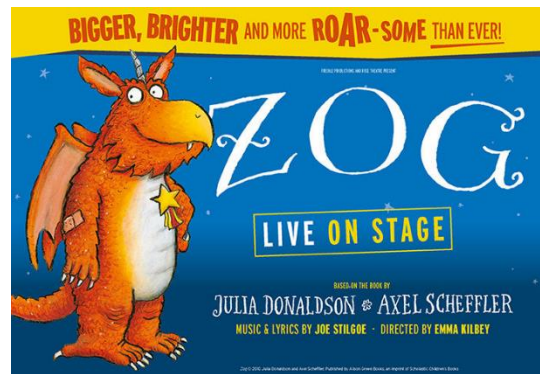


Snack and Drinks provided

Thursday 26th August
Birmingham Theatre Trip

11:50 meeting at Wolverhampton Train Station. Theatre show is only 1 hour, hopefully we can find somewhere for a drink and then have a quick trip around the canal quarter & library. Can they be given a bit of a brunch before leaving home. Returning home for around 4.30pm. Happy to text around when we get on the train as parking is only free for a short time at the station.

5 – 12 years



Tuesday 31st August

10:30 – 1:45

**Clay Pidgeon Shoot and Buffet
lunch**

Millride Country Sports
Bognop Road Essington, Wolverhampton WV11 2AZ



This is live ammunition!!

Strict adherence to the rules.



Please have a word before dropping them off, any silly behaviour and we will ask for them to be collected. Also the guns do kick back a bit, the secret is to hold them firm into your shoulder. Lunch is buffet style

Just a final word. LUP allocate a large sum of money towards the summer playscheme each year and this year it will be around £15,000. I am sure that by the morning of 5th July just about everything will be fully booked. Off the May / June newsletter we did have some 1:1 places not turn up. These are expensive places and not popular to fund. We ask that if your plans change over the summer then you let us know as soon as you can so that we can reallocate, this is especially true of 1:1 places. Places will be allocated fairly but even so it is unlikely you will receive everything you want. Please pay attention to your bookings confirmation email and if you don't receive it by Wednesday 7th July, please query it with Claire.